

DataMAX Software Group, Inc.
El Dorado Hills, CA 95762
USA

Oracle SCM Cloud Suite Inventory Management (IM) Miscellaneous Receipt

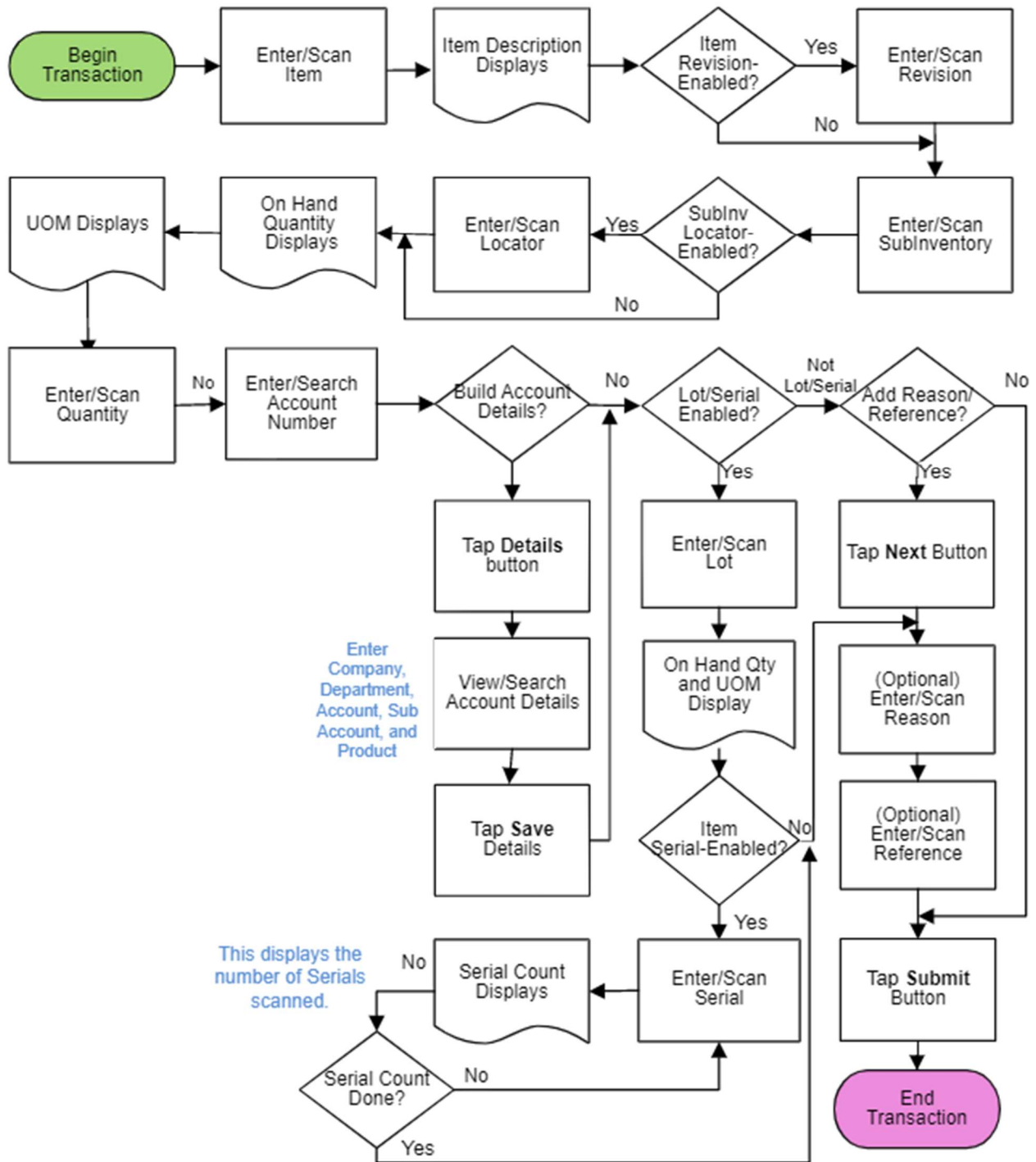
This application can be used for a variety of inventory transactions to receive inventory.

Workflow Documentation

2022

RFgen provides its customers Oracle-validated, ready-to-use suites of SCM Cloud applications. This document describes the business workflow used in this application.

Oracle SCM Cloud IM Miscellaneous Receipt



IM – Miscellaneous Receipt

The Miscellaneous Receipt application can be used to receive material in inventory that does not have or require documentation.



Workflow Details

First the user enters, scans, or searches and selects the inventory item.

The description of the item displays.

If the item is revision-controlled, the revision field is visible. The user enters, scans, or searches the revision.

Next, the user enters, scans, or searches and selects the issuing sub-inventory.

If the sub-inventory is locator controlled, the locator field is visible. The user scans, enters or searches the issuing locator.

The quantity on-hand and UOM (Unit of Measure) displays.

Next, the user enters or scans the quantity.

The account field displays. Depending on how the account is configured, the user can either search and enter an account value if one is not

supplied.

Next, if the item is lot and/or serial enabled, the lot screen will display.

If the item is not lot/serial enabled the **Next**, **Details**, and **Submit** buttons display.

To submit the transaction without adding a reason or reference code, the user taps the **Submit** button.

To add a reason or reference, the user taps the **Next** button.

To view or build account segments, the user taps the **Details** button. This will display the account details (Company, Department, Account, Sub Account, and Product segments) and allow the user to save changes and return to the prior screen.

Lot and/or Serial and Reason/Reference Code

If the item is lot-enabled, the user enters, scans, or searches and selects the lot number.

The on-hand quantity and UOM against the selected sub-inventory, locator, and lot number display.

If the item is serial-controlled, the user enters, scans, or searches and selects the serial number. The serial counter increases once the serial number is validated.

The Reason field is an optional entry. The user enters, scans, or searches and selects the reason.

The Reference field is an optional entry. The user enters, scans, or searches and selects the application reference.

The **Submit** button will display. The **Submit** button will perform the miscellaneous receipt in Oracle Cloud and reset the application.

The arrow in the upper left corner will take the user back to the previous page.