

DataMAX Software Group, Inc.  
El Dorado Hills, CA 95762  
USA

# Oracle SCM Cloud Suite Manufacturing (MFG) Work Order Issue

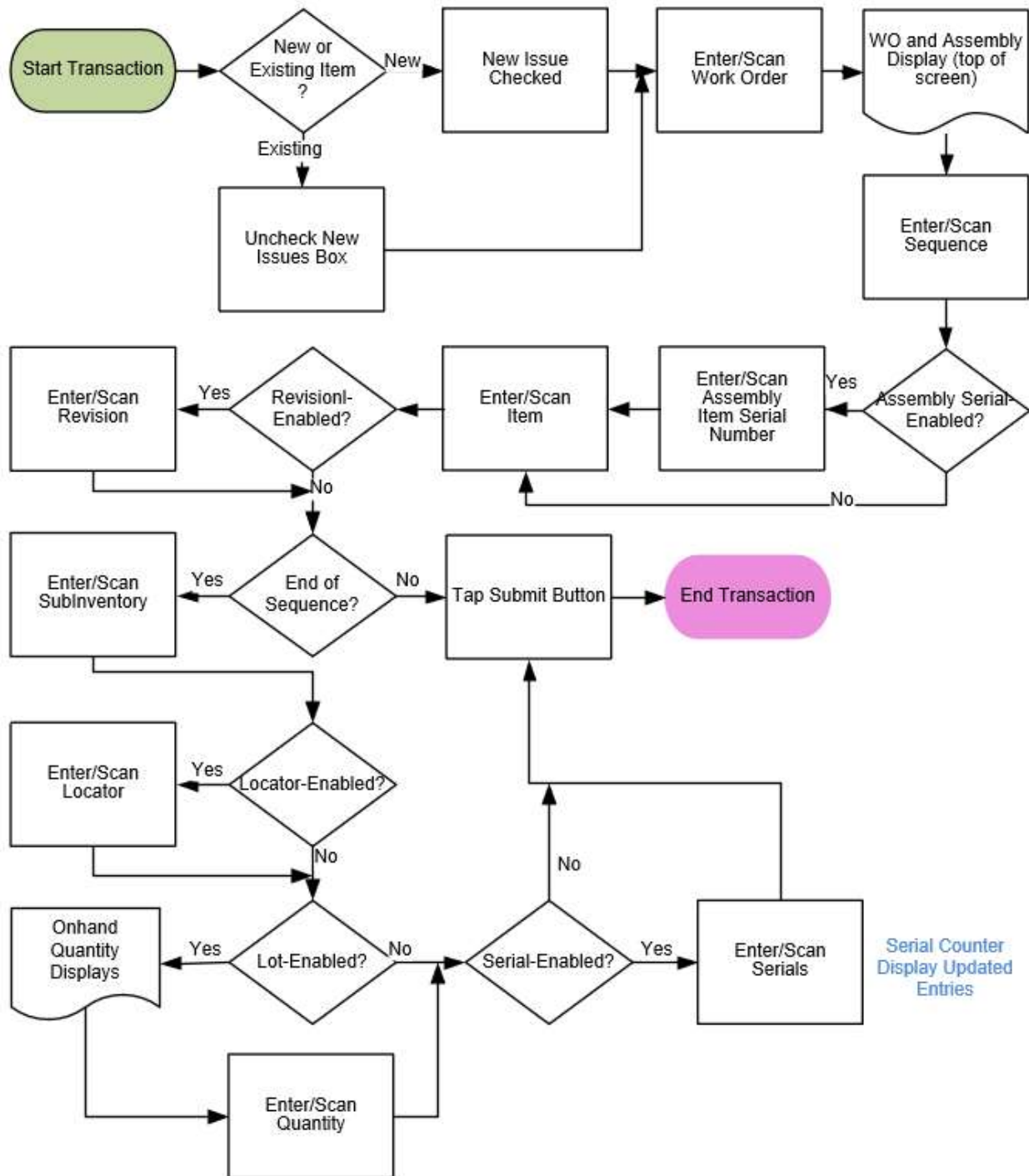
This application is used to complete work orders for discrete manufacturing process.

---

Workflow Documentation  
2022

RFgen provides its customers Oracle-validated, ready-to-use suites of SCM Cloud applications. This document describes the business workflow used in this application.

# Oracle SCM Cloud: Manufacturing – WO Issue



## Manufacturing: Work Order Issue

In the Oracle SCM is a Work Definition that lists components and quantities that need to be issued to build an assembly. This application is used to issue components to discrete manufacturing work orders.

For example, if a Work Definition requires 100 components to complete an assembly, but only has 70 of them, then the user would first select the component and issue 70 components to the WO. Then, the user would return to the beginning of the application, and check the New Items box, add the substitute item that wasn't on the Work Definition, and enter the remaining quantity of 30 substitute items to the WO.



### Workflow Details

When the application launches, the Work Order field and a checkbox of New Item displays.

First the user scans, enters, or searches the work order number in the **Work Order** field.

**By default, the New Item Issue is NOT checked.** The user leaves the box unchecked unless there is a need to add a new component that needs to be issued. (See example above.)

Next, the user enters, selects, or searches the **WO Sequence**.

The assembly item description, available quantity and UOM display.

If the assembly item is serial-controlled, the assembly serials display. Then the user scans, enters or searches the assembly item serial number. If the assembly item is not serial-control the assembly serials will not display.

Next, the user scans, enters or searches the component or item.

If the scanned component is revision-controlled, the user scans, enters or searches the revision.

Next, the user scans, enters or searches the sub-inventory from where to issue the component.

Next if the subinventory is locator-controlled, then the user will search, scan, or enter the locator.

Next, if the subinventory is lot-enabled, the user will be requested to enter the lot number. If the lot is also serial-enabled, then the user must enter the serial's equivalent to the issue quantity entered.

Next, the On-hand quantity (the maximum amount that can be entered) for the component or item and its UOM displays. The user enters the quantity to be issued.

If the subinventory is serial-controlled, then the user will scan or enter a count of serials equal to the issue quantity.

Finally, the user taps the **Submit** button.

The **Submit** button issues the component or items in Work Order to the Oracle SCM Cloud.

The arrow in the upper left corner takes the user back the user back to the prior screen.