

DataMAX Software Group, Inc.
El Dorado Hills, CA 95762
USA

Oracle SCM Cloud Suite Put Away

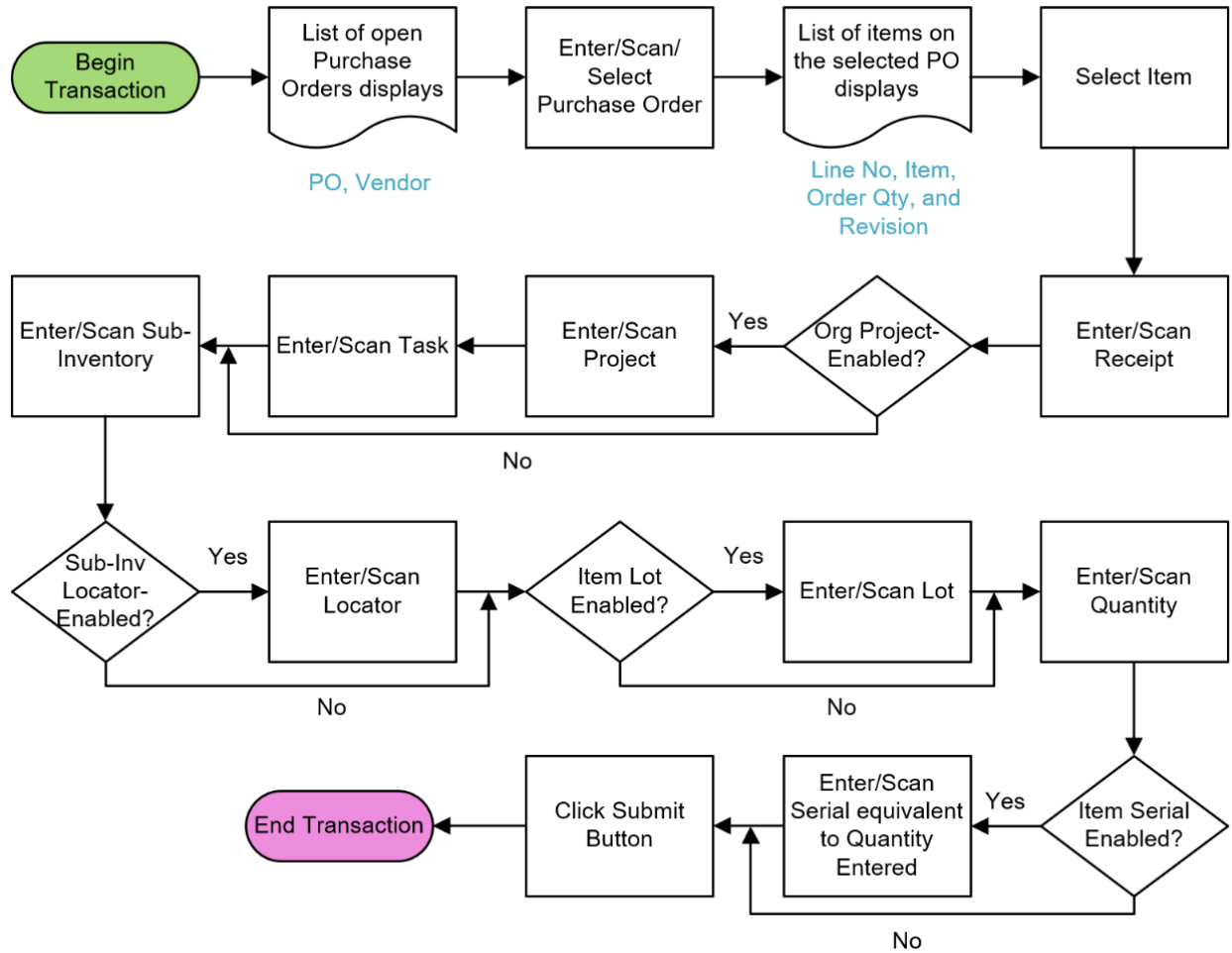
This application is developed for the Oracle Purchasing module of Oracle SCM Cloud. It allows user to perform put-away for purchase order (PO) items and inventory items, and for Standard and Inspection Required routing. This application also allows the user to perform put-away project/task driven inventory.

Workflow Documentation

2022

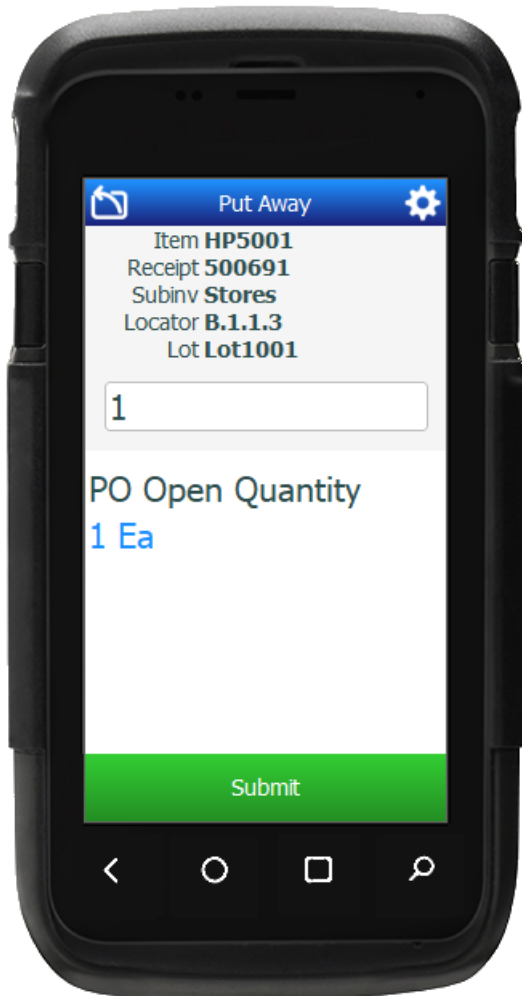
RFgen provides its customers Oracle-validated, ready-to-use suites of SCM Cloud applications. This document describes the business workflow used in this application.

Oracle SCM Cloud: PO – Put Away Workflow



PO – Put Away

This application is developed for the Oracle Purchasing module of Oracle SCM Cloud. It allows user to perform put-away for purchase order (PO) items and inventory items, and for Standard and Inspection Required routing. This application also allows the user to perform put-away project/task driven inventory.



Workflow Description

First, a list of open purchase orders displays. The user scans, enters, or selects the PO in the **Purchase Order** field.

Next, the list of open line items for the PO displays. It includes the line number, item, quantity, and if applicable, revision. The user selects a PO item from the list.

Next, the user scans, enters, or searches the **Receipt Number** tied to the purchase order.

The **Project** field becomes visible if the inventory organization is project-enabled. The user scans, enters, or searches for the project.

The **Task** field becomes visible if the inventory organization is project-enabled. The user scans, enters, or searches for the task.

The user scans, enters, or searches for the sub-inventory in the **Sub-Inventory** field.

Next, if the sub-inventory is locator-enabled, then the user searches, scans, or enters the **Locator**.

If the item is lot-enabled, the user will be requested to enter the **Lot** number.

Next, the user enters the received quantity in the **Quantity** field.

If the item is serial-enabled, then the user must enter the serial's equivalent to the quantity entered. The serial counter increments every time the user scans the valid serial number.

Finally, the user taps the **Submit** button.

The **Submit** button uploads the transaction to put-away the item in the Oracle Cloud system.

The arrow in the upper left corner undoes the current entry and moves the cursor back to the previous prompt until you reach the menu.