

DataMAX Software Group, Inc.
El Dorado Hills, CA 95762
USA

Deltek Costpoint - Issue to Manufacturing Orders

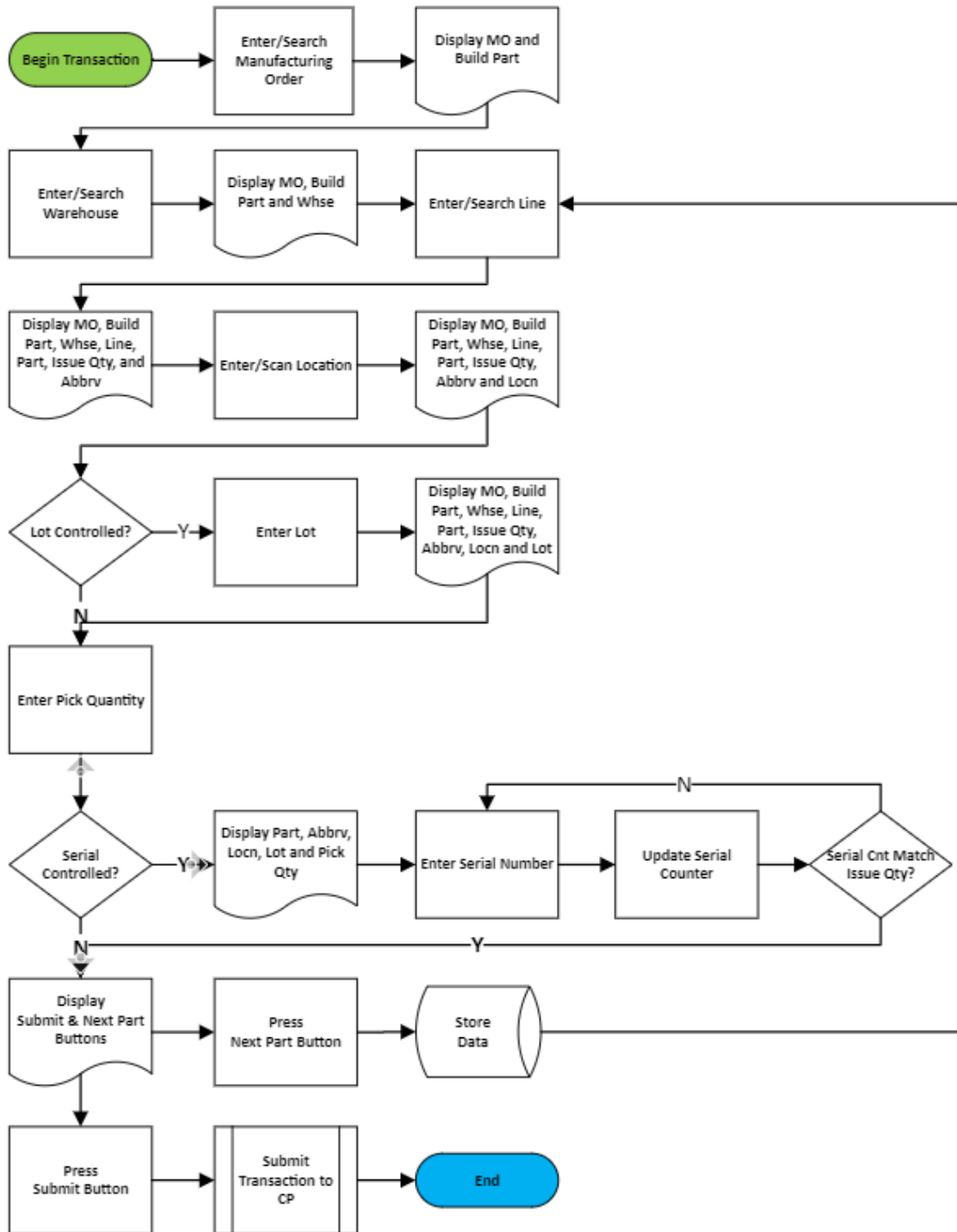
This application issues parts directly to a manufacturing order without referencing any routings.

RFgen Functional Documentation 2022

RFgen provides its customers Costpoint-validated, ready-to-use suites of applications and a development environment that can be used to create new apps or to modify existing apps.

This document describes the business workflow and technical information used in this application.

Costpoint: Issue to Manufacturing Order



FPRII0300 – Issue to Manufacturing Orders



This application issues parts directly to a manufacturing order without referencing any routings.

Description of Workflow

First the user enters, searches, or scans the manufacturing number.

The manufacture order number and build part display at the top of the screen.

The From Warehouse field displays the value defaulted from the users profile. The user taps the **Next** button to accept the value, or the user can enter, search, or scan the from warehouse to change it.

The from warehouse displays with the manufacture number and build part at the top of the screen.

The user enters or searches the line number.

The manufacture order number, build part, from warehouse, line, part, open issue quantity, and abbreviation display at the top of the screen.

The user enters, searches, or scans the location.

The location displays with the manufacture number, build part, from warehouse, line, part, open issue quantity, and abbreviation.



Depending on whether the part is lot controlled and/or serial controlled, the user is prompted to enter the lot followed by the pick quantity, or the pick quantity followed by the serial.

If the part is not lot or serial controlled, the on hand quantity and unit of measure display below the pick Quantity field.

The user enters the pick quantity being issued to the manufacturing order. The pick quantity displays with the part, abbreviation, from location, lot number (if applicable) and at the top of the screen. The **Next Line** and **Submit** buttons display at the bottom of the screen.

If the part is lot-controlled, the user enters, searches, or scans the lot number. The lot number displays with the manufacture number, build part, from warehouse, line, part, open issue quantity, abbreviation, and location at the top of the screen. The On Hand quantity and unit of measure display below the pick Quantity field. The user enters the pick quantity as described above.

If the part is also serial-controlled or only serial-controlled (not lot controlled), the user enters the pick quantity as described above. The pick quantity is added to the top of the screen, and then the user is prompted to enter, search or scan serials in the Serials field. As each serial number is entered, it is added to the Entered Serials list and the counter is incremented. A **Next Line** and **Submit** button are also displayed.

If the user taps the **Next Line** button the collected data is staged (but not sent to CostPoint), the application is partially reset, and the user is moved to the Line field.

If the user taps the **Submit** button all the collected data is sent to Costpoint for transaction, the form is reset, and the user is returned to the Order field on the first screen.

At any time, the user can tap the back arrow in the upper left corner and the user will be returned to the previous screen/field.



Customization Considerations

If you are planning on creating a new version of this application or modifying it for a customer, consider asking these questions to help prepare your list of customization requirements.

1. Are there serial-controlled items?
2. Are there lot-controlled items?
3. Are there default sites/warehouses/etc. users are expected to transfer to/from?
4. Should users be allowed transfer to/from serial or lot numbers? For example, should users be allowed to change an item-specific serial or batch allocation?

