

DataMAX Software Group, Inc.
El Dorado Hills, Ca 95762
USA

Deltek Costpoint - Manufacturing Order Reliefs

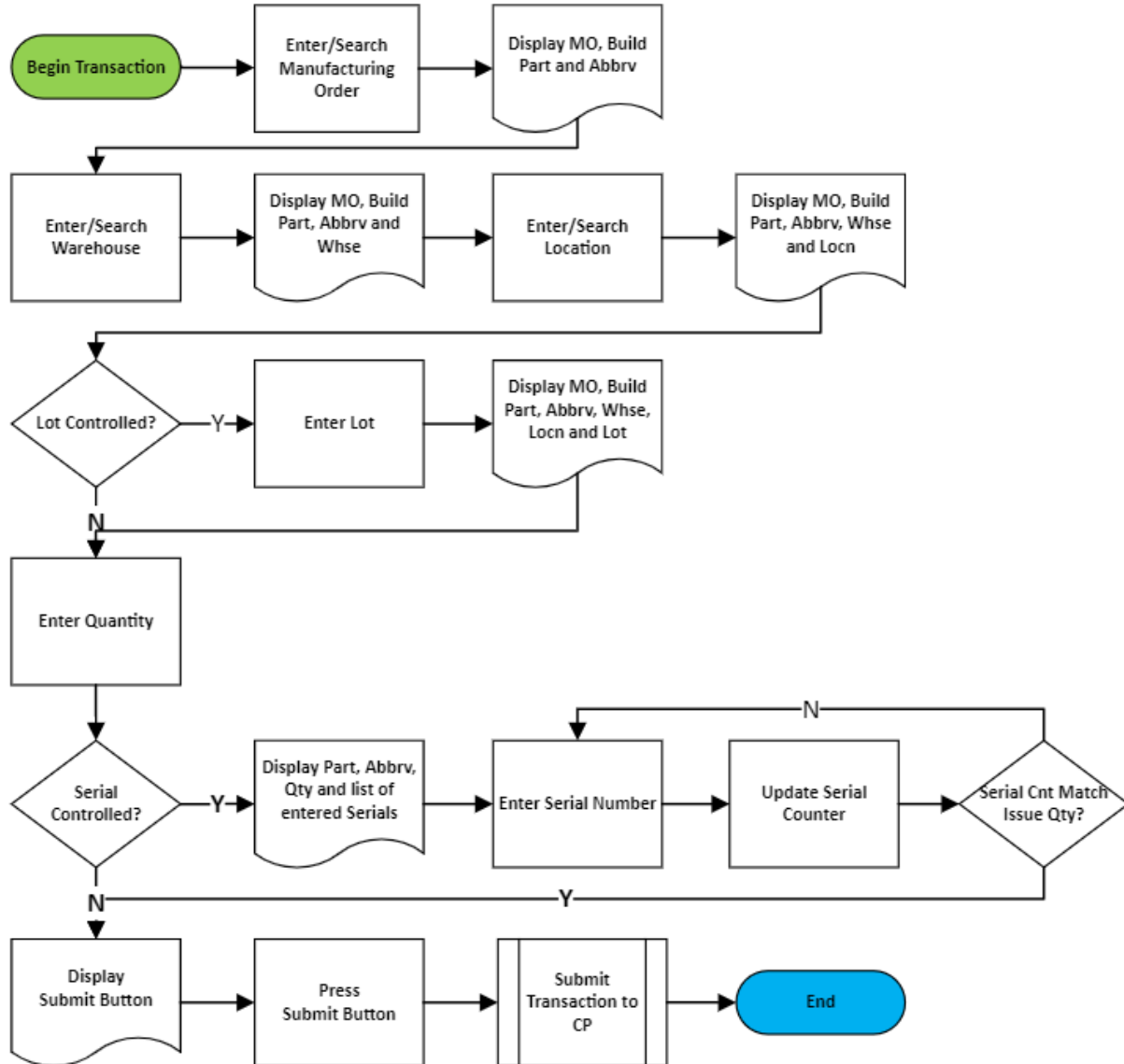
This application triggers the functions that relieves manufactured parts into inventory.

RFgen Functional Documentation 2022

RFgen provides its customers Costpoint-validated, ready-to-use suites of applications and a development environment that can be used to create new apps or to modify existing apps.

This document describes the business workflow and technical information used in this application.

Costpoint: Manufacturing Order Relief Workflow



FPROR0300 – Manufacturing Order Reliefs

This application triggers the functions that relieves manufactured parts into inventory.



Description of Workflow

First the user enters, searches, or scans the manufacturing number.

The manufacturing order, build part and abbreviation display at the top of the screen.

The Warehouse field displays the value defaulted from the user profile. The user taps the **Next** button to accept the value of can change it by entering, searching, or scanning the warehouse.

The warehouse displays with the manufacturing order, build part, and abbreviation at the top of the screen.

The user enters, searches, or scans the location the part will be relieved to.

The location displays with the manufacturing order, build part, abbreviation, and warehouse.

If the manufactured part is lot-controlled the Lot field displays, and the user enters, searches, or scans the lot number.

The lot number (if applicable) displays with the manufacturing order, build part, abbreviation, warehouse, location, lot number at the top of the screen. The remaining quantity to build displays below the Quantity field.



The user enters the quantity being relieved. The application validates it against the remaining open build quantity.

If the Serial prompt displays, the user enters the serial numbers for the part being relieved. As each serial number is entered, it is added to the Entered Serials list, and the counter is incremented.

Tapping the **Submit** button will send all the collected data to Costpoint for transaction.

At any time, the user can tap the back arrow in the upper left corner and the user is returned to the prior screen/field.

Customization Considerations

If you are planning on creating a new version of this application or modifying it for a customer, consider asking these questions to help prepare your list of customization requirements.

1. Are there serial-controlled items?
2. Are there lot-controlled items?
3. Are there default sites/warehouses/etc. users are expected to transfer to/from?
4. Should users be allowed transfer to/from serial or lot numbers? For example, should users be allowed to change an item-specific serial or batch allocation?

