

SAP

EXTENDED WAREHOUSE MANAGEMENT – Handling Unit Repack

Handling Unit (HU) is a generic term for any type of physical unit consisting of packaging materials (load carriers/packing material) and the goods contained on/in it.

This application is used to pack partial quantity from a source HU into a new HU.

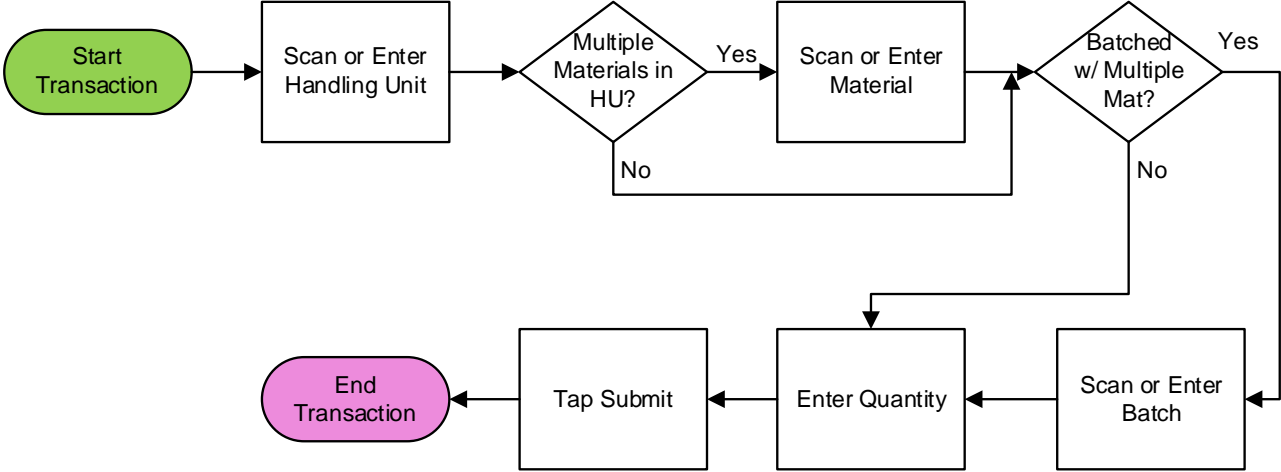
RFgen Functional Documentation

2024

RFgen provides its customers SAP-validated, ready-to-use suites of Open Source applications and a development environment that can be used to create new apps or to modify existing apps.

This document describes the business workflow and technical information used in this application.

SAP: Extended Warehouse Management (EWM) – Handling Unit Repack



SAP Extended Warehouse – Handling Unit Repack

Handling Unit (HU) is a generic term for any type of physical unit consisting of packaging materials (load carriers/packing material) and the goods contained on/in it.

This application can be used to pack partial quantity from a source HU into a new HU.

Navigation Details



The Settings button displays at the bottom of the Menu. It allows the user to set re-usable values such as the **warehouse ID** so the rest of the application workflow can immediately start from this "Location". The Organization will sometimes appear as the Location but is not the same as a Locator.



The Back arrow at the top of an application takes the user to the prior page or field.



The Exit button exits the application and takes the user to the Menu. If data was entered, the user is informed that data entered will be discarded if the application is exited.



If the device has a scanning feature, it will scan a barcode and entered the value into the field that the user is on.



The Next button is the same as tapping the Enter key on a key board.



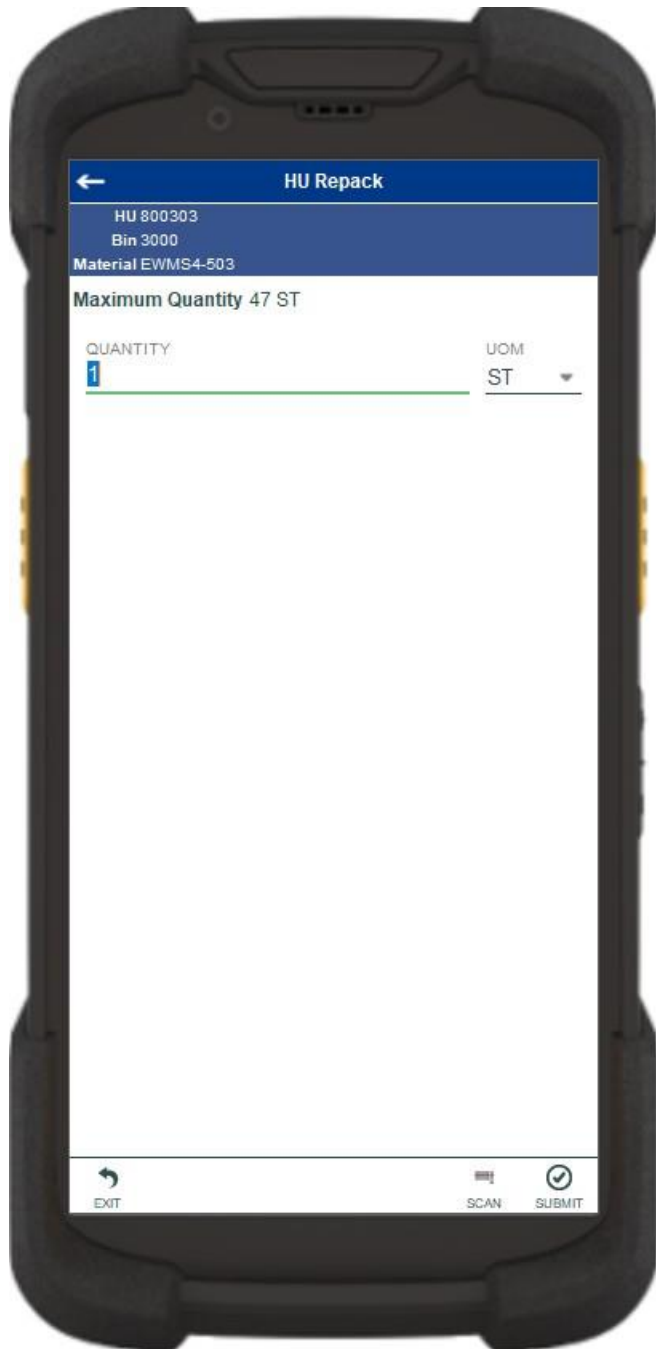
The Filter icon searches for entries by the first few characters or letters in a Search list



The Submit button will display when the last field for completing a transaction is reached. The last field of a workflow depends on how the customer's data is setup.



Description of Workflow



First, the user will scan or enter a handling unit (HU).

The HU must be in a packing work center.

The Material field is visible only if multiple materials exist in the HU. The user scans, enters, or searches for a material. The material must exist in the HU.

The Batch field is visible only if the material is batch-managed and multiple batches exist in the HU. The user scans, enters, or searches for a batch. The batch must exist in the HU for the material.

The packed quantity of the material/batch in the HU is displayed as the Maximum Quantity.

The user enters the quantity to be packed into a new HU. The entered quantity must be less than the maximum quantity.

The user taps the **Submit** button to post the transaction to SAP. A warehouse task will be created to create a new HU with the entered quantity.

The arrow in the upper left corner undoes the current entry and moves the cursor back to the previous prompt until you reach the menu.

