

SAP

EXTENDED WAREHOUSE MANAGEMENT – Pack Material

“Handling Unit” (HU) is a generic term for any type of physical unit consisting of packaging materials (load carriers/packing material) and the goods contained on/in it.

This application is used to pack material into a handling unit.

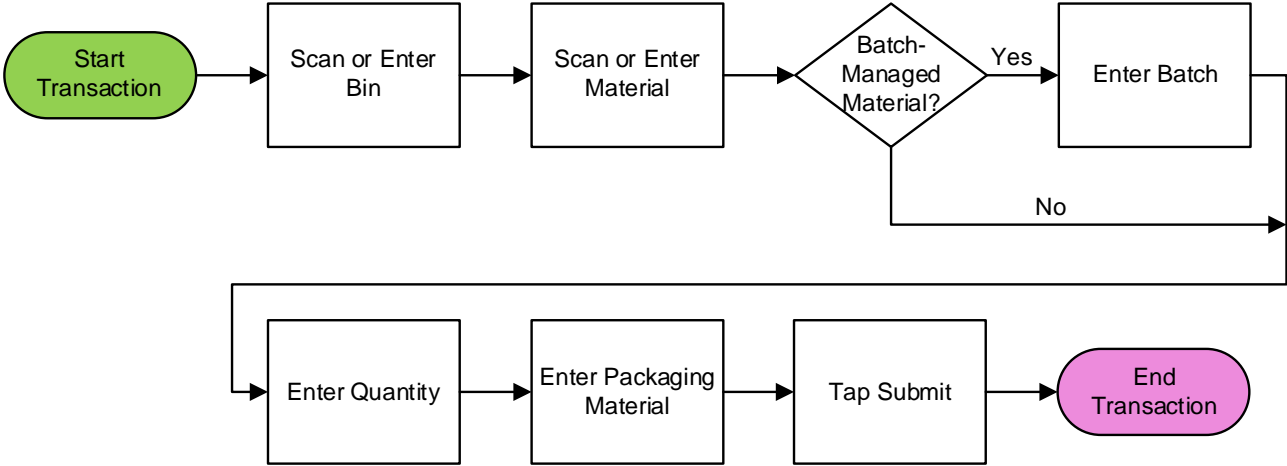
RFgen Functional Documentation

2024

RFgen provides its customers SAP-validated, ready-to-use suites of Open Source applications and a development environment that can be used to create new apps or to modify existing apps.

This document describes the business workflow and technical information used in this application.

SAP: Extended Warehouse Management (EWM) – Pack Material



SAP Extended Warehouse Management – HU Pack Material

Handling Unit (HU) is a generic term for any type of physical unit consisting of packaging materials (load carriers/packing material) and the goods contained on/in it.

This application can be used to pack material into a HU.

Navigation Details



SETTINGS The Settings button displays at the bottom of the Menu. It allows the user to set re-usable values such as the **warehouse ID** so the rest of the application workflow can immediately start from this "Location". The Organization will sometimes appear as the Location but is not the same as a Locator.



The Back arrow at the top of an application takes the user to the prior page or field.



EXIT The Exit button exits the application and takes the user to the Menu. If data was entered, the user is informed that data entered will be discarded if the application is exited.



SCAN If the device has a scanning feature, it will scan a barcode and entered the value into the field that the user is on.



NEXT The Next button is the same as tapping the Enter key on a key board.



The Filter icon searches for entries by the first few characters or letters in a Search list



SUBMIT The Submit button will display when the last field for completing a transaction is reached. The last field of a workflow depends on how the customer's data is setup.



Description of Workflow



First, the user will scan or enter the bin.

The user scans, enters, or searches for a material. The material must exist in the bin.

The Batch field is visible only if the material is batch-managed. The user scans, enters, or searches for a batch. The batch must exist in the bin for the material.

The packed quantity of the material/batch in the bin is displayed as the Maximum Quantity. The user enters the quantity to be packed. The entered quantity must be less than the maximum quantity.

The user scans, enters, or searches for a packaging material.

The user taps the **Submit** button to post the transaction to SAP. A warehouse task will be created to create a new HU and pack the material into the HU.

The arrow in the upper left corner undoes the current entry and moves the cursor back to the previous prompt until you reach the menu.