

DataMAX Software Group, Inc.

El Dorado Hills, CA 95762

SAP WAREHOUSE MANAGEMENT – PICK BY TRANSFER REQUIREMENT

The general purpose of a Transfer Requirement (TR) is to help plan and facilitate the movement of goods using the Warehouse Management System.

This application is used to pick material by TR for the physical removal of material from bins.

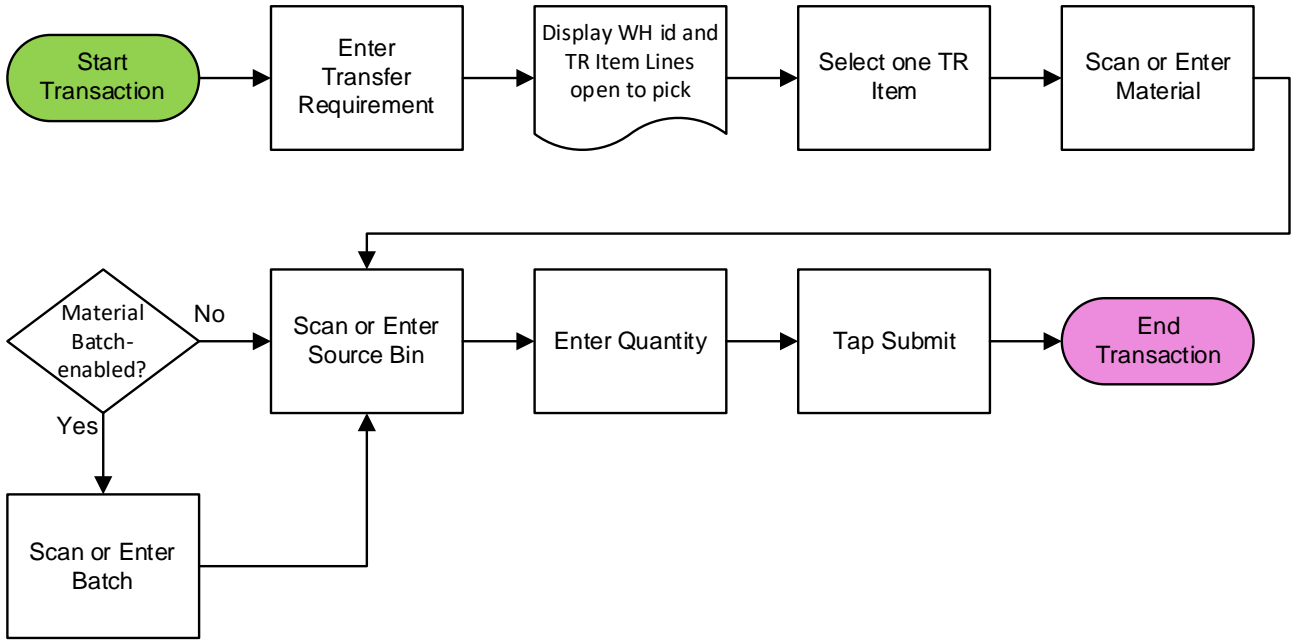
RFgen Functional Documentation

2024

RFgen provides its customers SAP-validated, ready-to-use suites of Open Source applications and a development environment that can be used to create new apps or to modify existing apps.

This document describes the business workflow and technical information used in this application.

SAP: Warehouse Management (WM) – Pick by Transfer Requirement (TR)




Warehouse Management – Pick by Transfer Requirement


The general purpose of a Transfer Requirement (TR) is to help plan and facilitate the movement of goods using the Warehouse Management System. Pick activities, transfer processes and setup of the transfer orders/TRs/OBDs are configured at the SAP WMS level.


This application is used to pick material by TR for the physical removal of material from bins.


Navigation Details


 The Settings button displays at the bottom of the Menu. It allows the user to set re-usable values such as the warehouse ID so the rest of the application workflow can immediately start from this "Location". The Organization will sometimes appear as the Location but is not the same as a Locator.


 The Back arrow at the top of an application takes the user to the prior page or field.

 **EXIT** The Exit button exits the application and takes the user to the Menu. If data was entered, the user is informed that data entered will be discarded if the application is exited.

 **SCAN** If the device has a scanning feature, it will scan a barcode and entered the value into the field that the user is on.

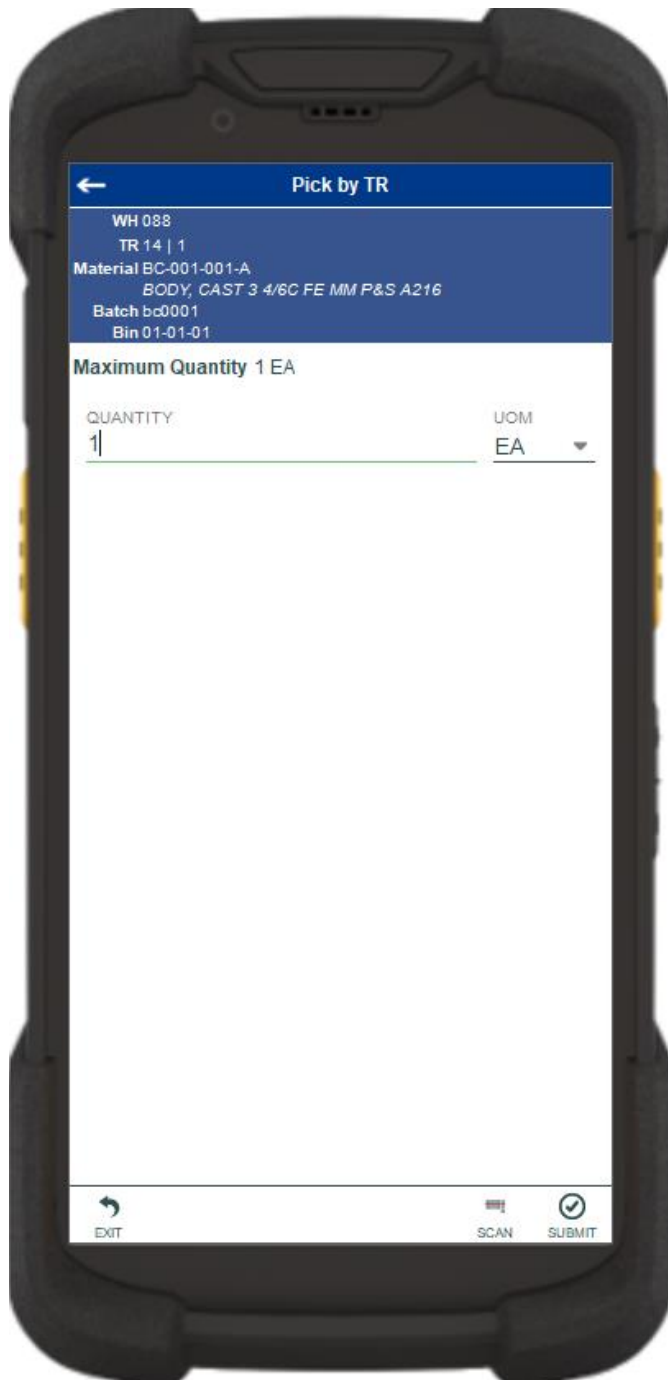
 **NEXT** The Next button is the same as tapping the Enter key on a key board.

 The Filter icon searches for entries by the first few characters or letters in a Search list

 **SUBMIT** The Submit button will display when the last field for completing a transaction is reached. The last field of a workflow depends on how the customer's data is setup.



Description of Workflow



First the user will scan, enter, or search for a transfer requirement (TR). The TR must be open to pick.

In this example, the warehouse (WH) id is defaulted from the user's login displays at the top of the application.

A list of open TR lines with details including material, material description, open quantity to pick, and three suggested source bins also displays.

The user selects one item from the list to proceed.

The user enters or scans the material.

The material must match the one on the selected TR item.

The batch page is visible only if the material is batch-managed. The user enters or scans the batch. The batch must match the one on the selected TR item.

Three suggested source bins containing the material displays. The user may scan, enter, or search for the bin from where the material is picked from. The user doesn't have to follow the suggestion.



The open quantity on the TR item displays as the maximum quantity. The user enters the quantity to pick.

The user taps **Submit** button to post the transaction to SAP.

The arrow in the upper left corner undoes the current entry and moves the cursor back to the previous prompt until you reach the menu.



Technical Information

This lists the tables used for validations, searches and defaults by prompt.

Prompt	Table	Description
WH	T300T	Warehouse Master
Plant	T001W	Plant Master
Bin	LAGP	Bin Details
App Lookup	LQUA	Warehouse stock details
Transfer Requirement	LTBK	Transfer Requirement Header
Transfer Requirement Item	LTBP	Transfer Requirement Item

